

Technical data sheet

**BL WORKBENCHES**



# BL WORKBENCHES

Workbenches without an extraction unit used in combination with centralised extraction systems or filter modules equipped with an electric fan.

They are suitable for the extraction of fumes generated by various welding processes, of dust generated by grinding processes and of glue vapours (by adding an activated-carbon filtration system).

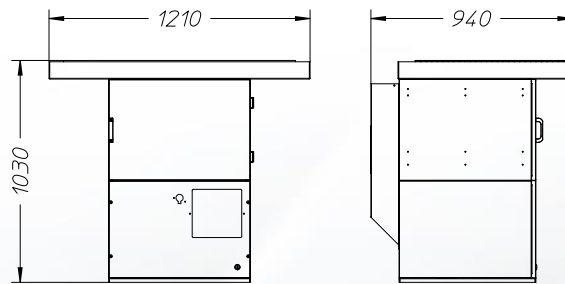
They come with an extraction grate on which to place the pieces being worked on.

They can be equipped with non-extracting protective bulkheads with or without protective glass or extraction bulkheads with anti-rebound fragment protection slats.

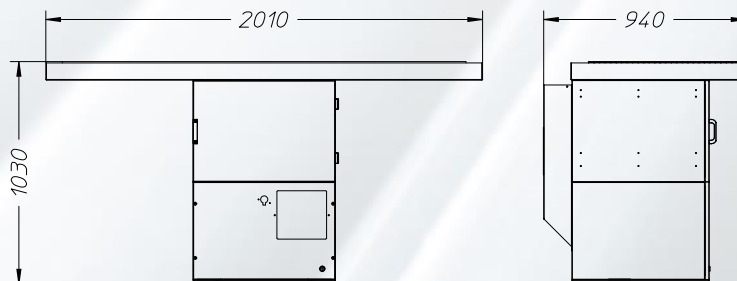
The filter system consists of a metallic mechanical prefilter.

## STANDARD BENCH TECHNICAL DATA

Item code	Model	DIMENSIONS (L x D x H) mm	POWER [KW]	POWER SUPPLY [V] - [Hz]	FLOW RATE [m³/h]	NOISE LEVEL [dB(A)]
<b>U35260012</b>	BL 1200	1210x940x1030	-	-	-	-
<b>U35260013</b>	BL 2000	2010x940x1030	-	-	-	-



BL 1200



BL 2000

Code	Description
<b>U35260012</b>	<b>BL 1200 WORKBENCH</b>

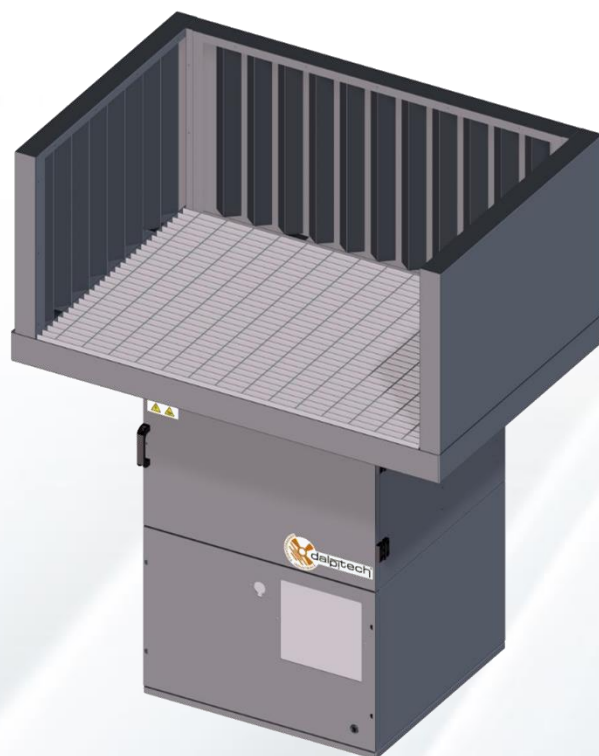
### STANDARD FEATURES

-	GRATE AND PLATFORM 1200x800
-	METALLIC PREFILTER

### OPTIONAL

L16060008	EXTRACTION BULKHEADS H.500
L16060009	PROTECTIVE BULKHEADS H.500

*Further customizations are possible. For information, please contact our sales office.*



Code	Description
<b>U35260013</b>	<b>BL 2000 WORKBENCH</b>

#### STANDARD FEATURES

-	GRATE AND PLATFORM 2000x800
-	METALLIC PREFILTER AND POSTFILTER

#### OPTIONAL

L16060010	EXTRACTION BULKHEADS H.500
L16060011	PROTECTIVE BULKHEADS H.500

*Further customizations are possible. For information, please contact our sales office.*

