

Technical data sheet

## MOUSE MOBILE EXTRACTION UNITS



dalp̄itech®

# MOUSE MOBILE EXTRACTION UNITS

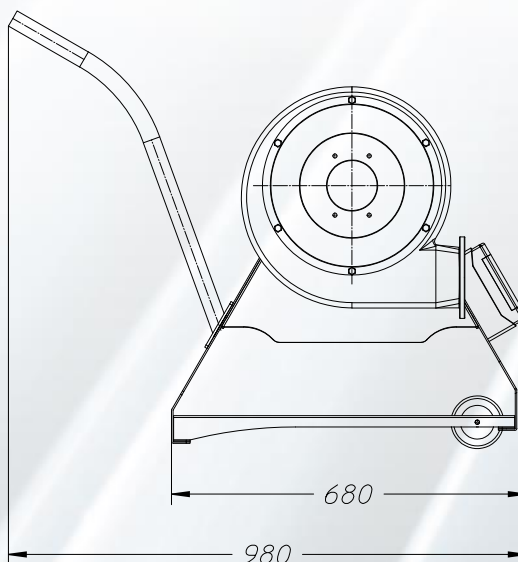
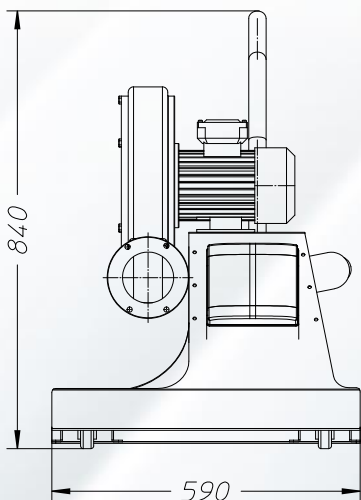
Mobile extraction units are designed to facilitate the aspiration of fumes, vapours, dust and waste in general, in places where traditional aspiration is difficult.

## STANDARD MACHINE TECHNICAL DATA

Item code	MODEL	DIMENSIONS (L x D x H) mm	POWER [KW]	POWER SUPPLY* [V] - [Hz]	FLOW RATE** [m³/h]	NOISE LEVEL [dB(A)]
<b>U35260033</b>	MOUSE 1	590x980x840	0.55	400 - 50	900	<70
<b>U35260034</b>	MOUSE 2	590x980x840	1.1	400 - 50	1440	<70
<b>U35260094</b>	MOUSE 3	590x980x840	1.5	400 - 50	1800	<70

*\*Also available in a 110V, 230V and ATEX version.*

*\*\*For higher flow rates, please contact our sales department.*



Code	Description
<b>U35260033</b>	<b>MOUSE 1 MOBILE EXTRACTION UNIT</b>

#### STANDARD FEATURES

-	ELECTRIC FAN 0.55 KW 400V
-	PLUG AND SOCKET 3P + T
-	ON-BOARD ELECTRICAL PANEL

#### OPTIONAL

H13110002	FLEXIBLE TUBE Ø 120 BLACK (20 MT)
H13110043	P2 PU FLEXIBLE TUBE Ø 120 TRANSPARENT (20 MT)

*Further customizations are possible. For information, please contact our sales office.*



Code

Description

**U35260034**      **MOUSE 2 MOBILE EXTRACTION UNIT**

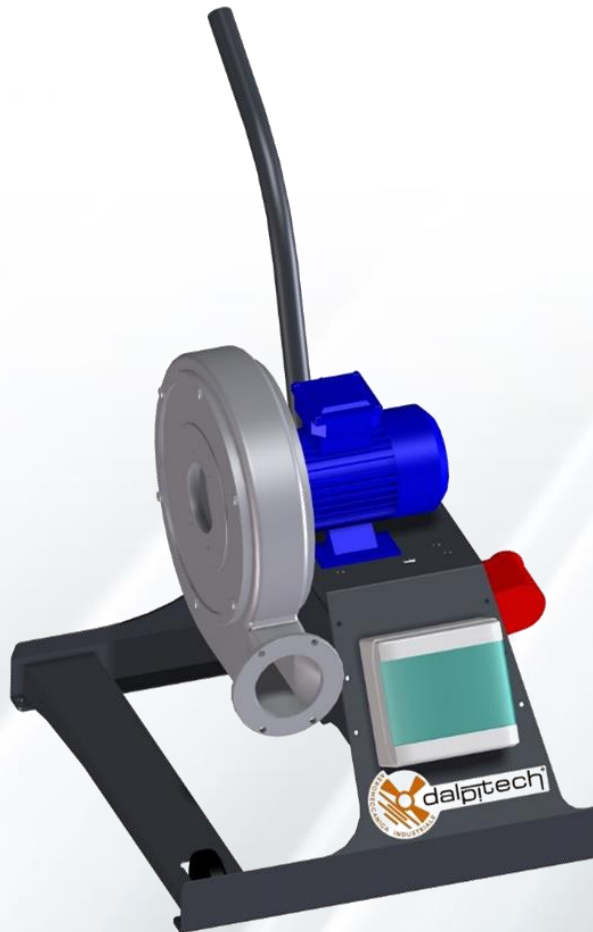
**STANDARD FEATURES**

- ELECTRIC FAN 1.1 KW 400V
- PLUG AND SOCKET 3P + T
- ON-BOARD ELECTRICAL PANEL

**OPTIONAL**

- H13110001      FLEXIBLE TUBE Ø 160 BLACK (20 MT)
- H13110085      P2 PU FLEXIBLE TUBE Ø 160 TRANSPARENT (20 MT)

*Further customizations are possible. For information, please contact our sales office.*



Code	Description
<b>U35260094</b>	<b>MOUSE 3 MOBILE EXTRACTION UNIT</b>

#### STANDARD FEATURES

-	ELECTRIC FAN 1.5 KW 400V
-	PLUG AND SOCKET 3P + T
-	ON-BOARD ELECTRICAL PANEL

#### OPTIONAL

H13110001	FLEXIBLE TUBE Ø 160 BLACK (20 MT)
H13110085	P2 PU FLEXIBLE TUBE Ø 160 TRANSPARENT (20 MT)

*Further customizations are possible. For information, please contact our sales office.*



Here are more illustrative images of the **MOUSE MOBILE EXTRACTION UNIT**

